



Search Microsoft.com



Windows XP Home

Security At Home

Microsoft At Home

Microsoft At Work

Windows XP Editions

- Home Edition
- Professional
- Media Center Edition
- Tablet PC Edition
- Professional x64 Edition

Information For

- Home Users
- Students
- Small Businesses
- IT Professionals
- Developers

Resources

- Using Windows XP
- Downloads
- Support
- Expert Zone
- Worldwide Sites
- Microsoft Update
- Windows Marketplace
- Windows Family

[Using Windows XP](#) > [Computer Setup and Maintenance](#)

Specify how folders open

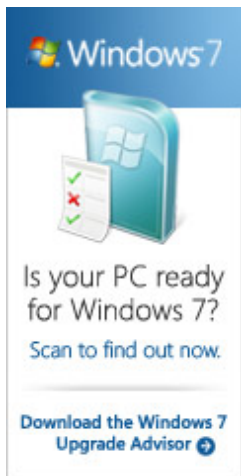
Published: September 7, 2006

Microsoft Windows XP automatically chooses how to display folders based on the types of files they contain. For example, Windows XP displays your My Pictures folder in either Filmstrip or Thumbnails view so that you can see the pictures without opening the files. However, Windows XP displays your My Music folder in Tiles view so that you can see the names of the songs. In this article, you'll learn the difference between each type of view and how to change your folder settings for individual folders or for all the folders on your computer.

Change the view for a single folder

If you are not satisfied with the way Windows XP displays a folder, you can change it by clicking the **Views** button on the toolbar and then selecting one of the following options:

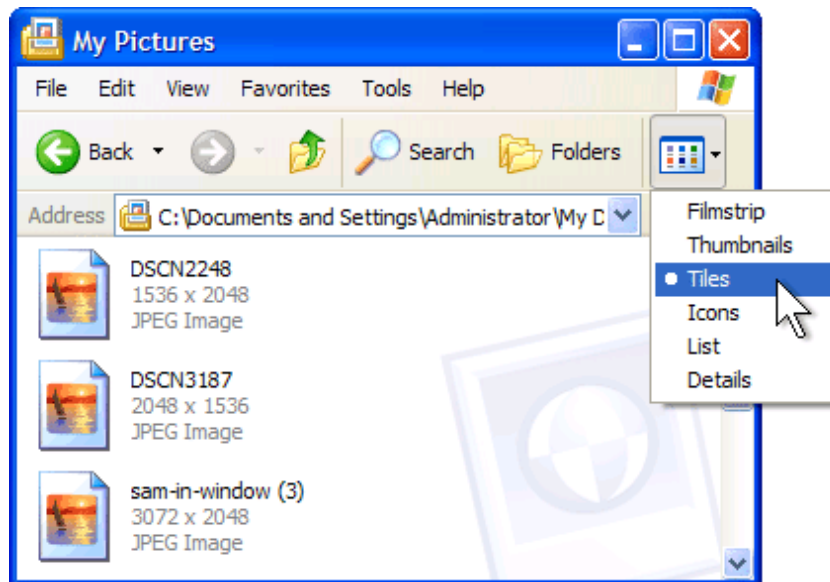
- **Filmstrip.** Displays a row of thumbnails (reduced images of pictures) and a large preview of the currently selected picture. Filmstrip view is perfect for folders that contain a few pictures.



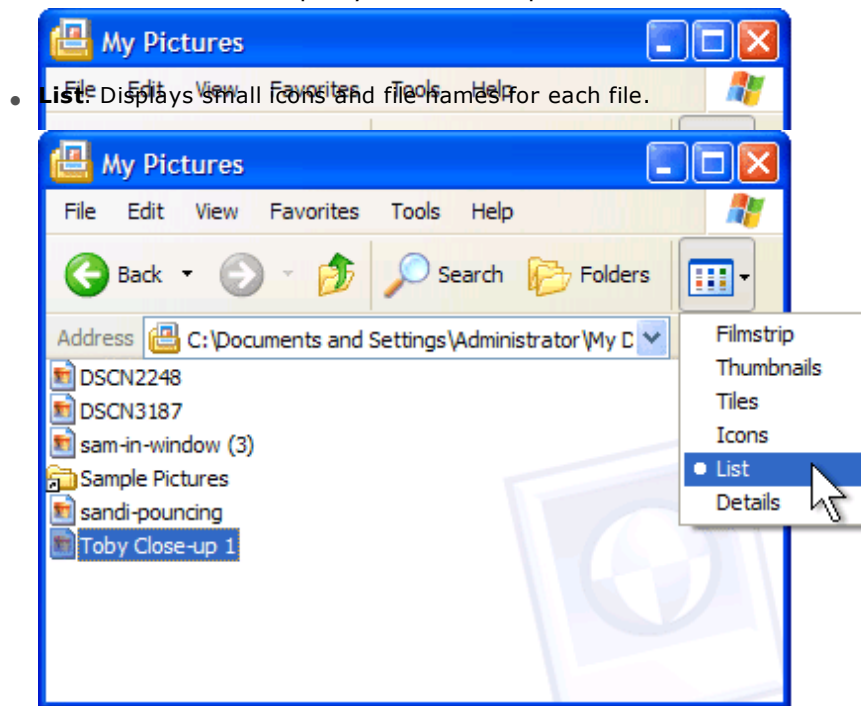
- **Thumbnails.** Displays thumbnails of pictures and videos. Thumbnails view is the best choice for folders containing a large number of pictures.



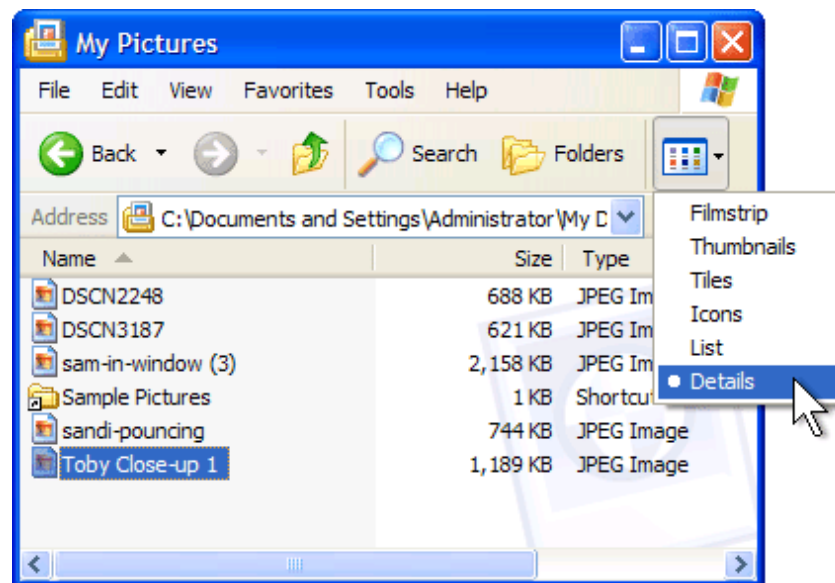
- **Tiles.** Displays large icons, file names, and file information for each file.



- **Icons.** Displays medium-sized icons and file names for each file.



- **Details.** Displays small icons, file names, and other information about each file. [Details view](#) allows you to quickly sort files by clicking the column headings.



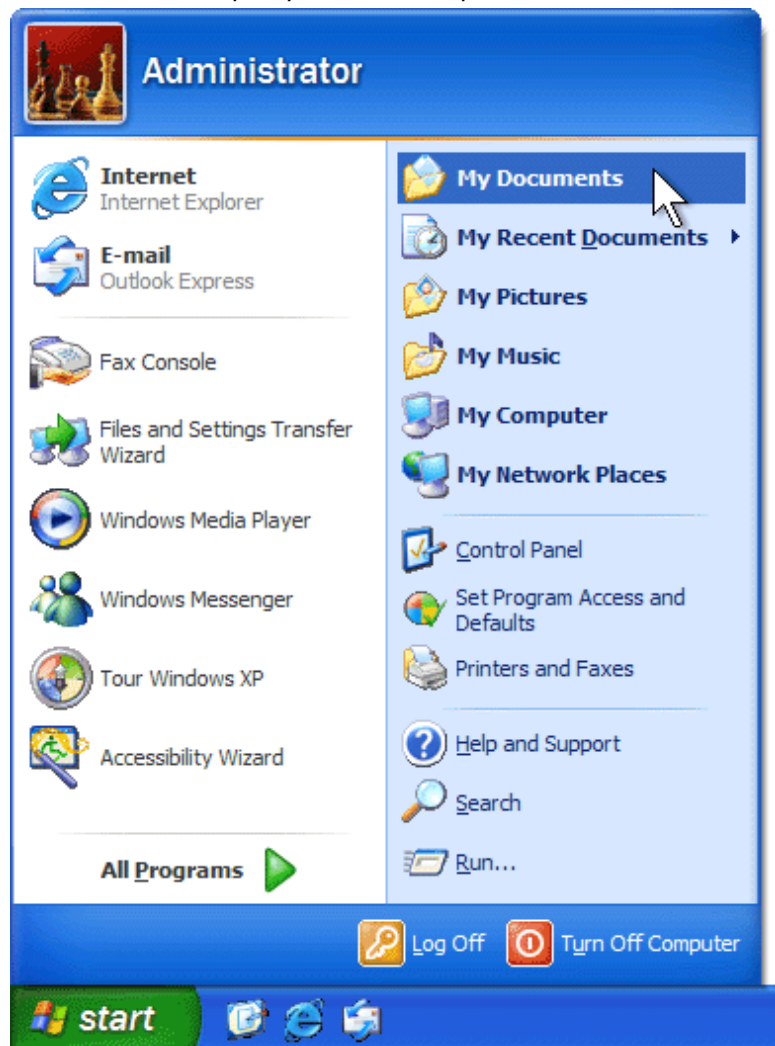
[↑ Top of page](#)

Change the view for all folders

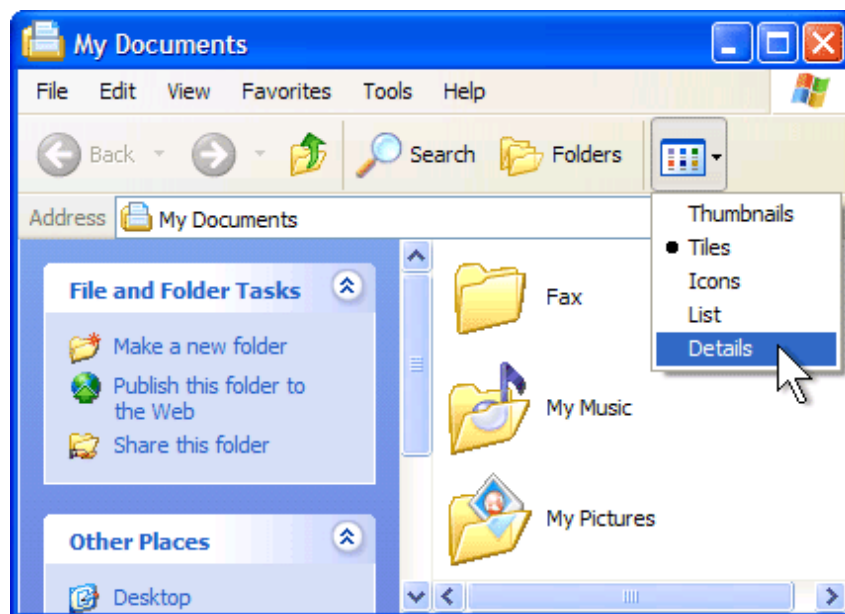
Clicking the **Views** button allows you to change the view for only the folder you currently have open. You can also reset the view for all folders.

To reset the view for all folders

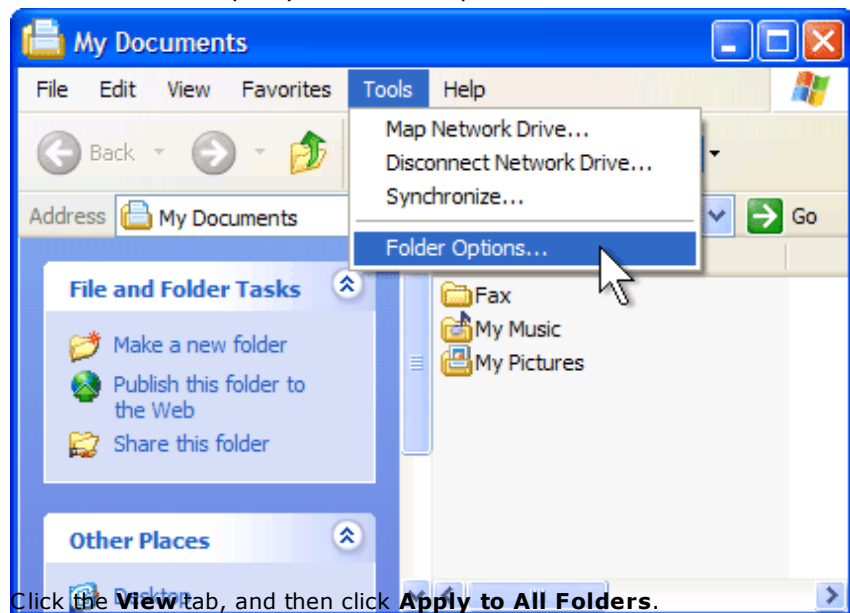
1. Click **Start**, and then click **My Documents**.



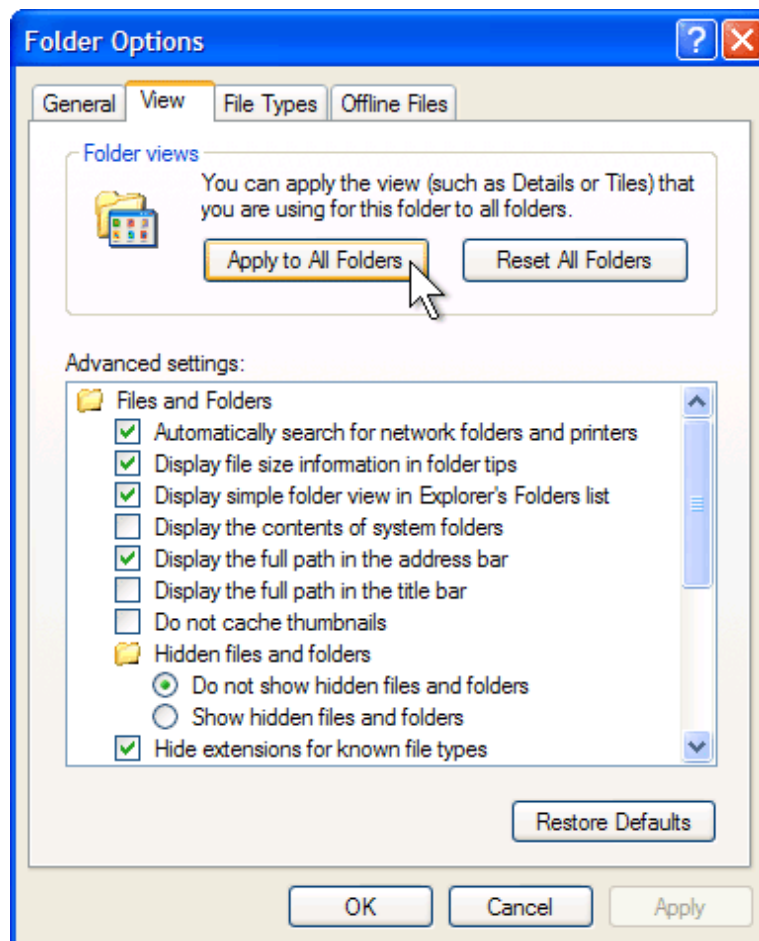
2. Click the **Views** button, and then click the view that you want to apply to all folders.



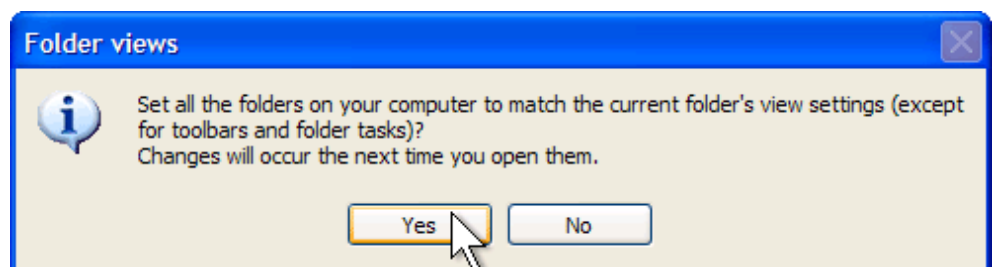
3. Click **Tools**, and then click **Folder Options**.



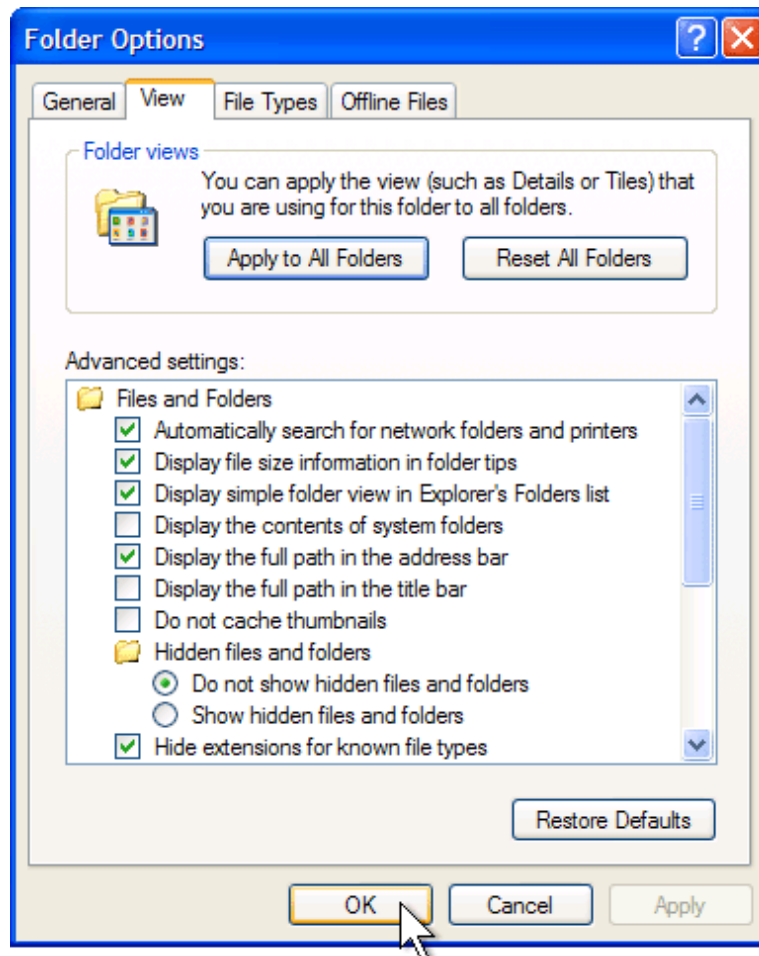
4. Click the **View** tab, and then click **Apply to All Folders**.



5. Click **Yes**.



6. Click **OK**.



The next time you open a folder, it will be displayed using the view you chose. To restore your original folder settings, repeat steps 1-3. Then, for step 4, click **Reset All Folders**.

[↑ Top of page](#)

[Manage Your Profile](#) | [Contact Us](#) | [Free Newsletter](#) | [RSS Feeds](#)

© 2011 Microsoft Corporation. All rights reserved. [Contact Us](#) | [Terms of Use](#) | [Trademarks](#) | [Privacy Statement](#)

Microsoft